

INFORMATION

The Hawaii Center for the Deaf and the Blind (HCDB) is the primary resource for Hawaii's children and youths who are deaf, hard-of-hearing, blind, partially-sighted or deaf-blind. HCDB serves children from 3 to 20 years old, their families, teachers and others interested in the education of these student populations. HCDB is state-supported, under the Hawaii Department of Education.

HCDB was established in 1914 and has had seven names, including the Diamond Head School. It is located on five acres in the Kapahulu district of Honolulu, island of Oahu. HCDB is within walking distance of Waikiki Beach, the Honolulu Zoo, the Waikiki Aquarium, Paki Park, the Waikiki-Kapahulu Library, and Kapiolani Park.

SERVICES PROVIDED

The following services are available through HCDB:

- **A school program for students who are deaf or deaf-blind**

The school is part of Hawaii's continuum of services as mandated in IDEA, the Individuals with Disabilities Education Act. During the 2008-2009 school year, approximately 75 students will be enrolled.

The school program primarily serves students who are deaf or hard-of-hearing, depending on identified program needs. HCDB staff members are implementing a Bilingual-Bicultural philosophy, using American Sign Language as

the primary language of instruction, with a strong emphasis on literacy skills in reading and writing English.

- **A dormitory program for neighbor island students enrolled in the school program**

The dormitory allows neighbor island students access to the instructional program. Students fly home on weekends and reside in the dormitory from Sunday evening until Friday. During the 2008-2009 school year, 19 students will live in the dormitory. (Others are day students, bused from their homes on Oahu.)

- **An evaluation team**

The HCDB evaluation team works with all of Hawaii's districts to determine eligibility and make program recommendations for students who are deaf, hard-of-hearing, blind, partially-sighted or deaf-blind. Evaluation team members also provide technical assistance statewide where students in the target populations attend local programs. Technical assistance helps teachers and families meet the needs of these students.

- **Accessible media for deaf and blind students**

HCDB's media center is a depository for adapted materials for students who are blind or partially-sighted. HCDB personnel also identify, locate and obtain such materials from other sources to distribute to these students to enable them to participate effectively in their regular education programs.

HCDB's media center also serves as a depository

for described captioned videos for individuals who are deaf, hard-of-hearing or visually impaired. The program has been established by the US Department of Education to disseminate instructional media in accessible formats.

- **Educational interpreting**

Educational Interpreters are provided for deaf or hard-of-hearing students in mainstream classrooms to access the curriculum of their peers. This service is provided as part of the student's Individualized Education Program (IEP).

WHO IS ELIGIBLE FOR SERVICES

Any Hawaii resident who is deaf, hard-of-hearing, deaf-blind, blind or partially-sighted and 3 to 20 years old may be eligible for some of HCDB's services (adults may also borrow captioned media). Referral for evaluation must be made initially by students' neighborhood (home) school.

Referrals/placement for the school program (including boarding) must be made by the student's local district through an IEP meeting that includes parents, the student when appropriate, the local district, the HCDB Administrator or designee, and others directly involved with the student.

Vision Statement:
***HCDB, a community
where all can excel***

GENERAL INFORMATION

HCDB operates on the calendar of the Hawaii Department of Education's public schools. For the 2007-2008 school year, some important dates are:

Students begin: July 29, 2008

Fall Intercession: October 6-10, 2008

Winter Recess: December 22 – January 2, 2009

Winter Intercession: January 5-9, 2009

Second Semester: January 13, 2009

Spring Break: March 23-27, 2009

Spring Intercession: March 30 – April 3, 2009

School Ends: June 5, 2009

School hours:

8:00 a.m. – 2:15 p.m. M/T/W/Th

8:00 a.m. – 1:00 p.m. F

Office hours:

7:30 a.m. – 4:30 p.m. Daily

VISITOR POLICY

Visitors are welcome to schedule appointments for tours, observations, and meetings with staff. Visits are limited so that students' work is not disturbed.

If visitors come without prior appointments, we will make every attempt to facilitate visits, but it is best to call ahead to ensure that classes or individuals are on campus at the time visitors arrive and approval is given.

Visits may be scheduled by calling:

HCDB Counselor - 733-4821

HCDB Office - 733-4999

NOTE: No photographs or videotapes of students or staff may be taken without permission from the Administrator.

FOR MORE INFORMATION:

Administrator

Hawaii Center for the Deaf and the Blind

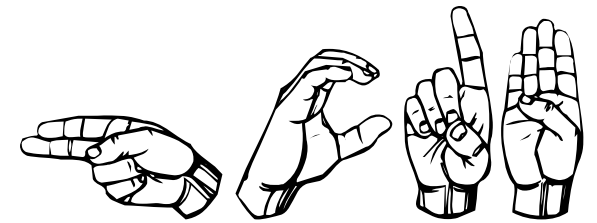
3440 Leahi Avenue

Honolulu, Hawaii 96815-4246

808-733-4999 (Voice/TTY)

808-733-4824 (fax)

October 10, 2008



Hawaii Center for the Deaf and the Blind

