

The mission of HSDB is to create a community in which:

High achievement is expected and encouraged,

Committed individuals work together to promote CARE* and

Develop excellence in academics, communication, independence and civic responsibility, and where

Both ASL and English are the language of instruction and communication.

* Communication, Aloha Spirit, Responsibility and Effort

Volunteers are welcome year round!

Teacher Work Year:

First semester: 07/25/09 – 01/04/10

Second semester: 01/5/10 – 5/27/10

Student Work Year:

First semester: 08/03/09 – 12/13/09

Second semester: 01/05/10 – 05/26/10

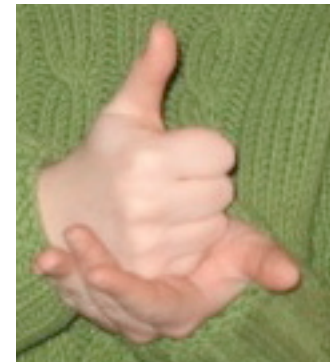
July 2009	August 2009	September 2009
Su Mo Tu We Th Fr Sa 1 2 3 4 5 6 7 8 9 10 11 12 13 14 15 16 17 18 19 20 21 22 23 24 25 26 27 28 29 30 31	Su Mo Tu We Th Fr Sa 1 2 3 4 5 6 7 8 9 10 11 12 13 14 15 16 17 18 19 20 21 22 23 24 25 26 27 28 29 30 31	Su Mo Tu We Th Fr Sa 1 2 3 4 5 6 7 8 9 10 11 12 13 14 15 16 17 18 19 20 21 22 23 24 25 26 27 28 29 30
October 2009	November 2009	December 2009
Su Mo Tu We Th Fr Sa 1 2 3 4 5 6 7 8 9 10 11 12 13 14 15 16 17 18 19 20 21 22 23 24 25 26 27 28 29 30 31	Su Mo Tu We Th Fr Sa 1 2 3 4 5 6 7 8 9 10 11 12 13 14 15 16 17 18 19 20 21 22 23 24 25 26 27 28 29 30	Su Mo Tu We Th Fr Sa 1 2 3 4 5 6 7 8 9 10 11 12 13 14 15 16 17 18 19 20 21 22 23 24 25 26 27 28 29 30 31
January 2010	February 2010	March 2010
Su Mo Tu We Th Fr Sa 1 2 3 4 5 6 7 8 9 10 11 12 13 14 15 16 17 18 19 20 21 22 23 24 25 26 27 28 29 30 31	Su Mo Tu We Th Fr Sa 1 2 3 4 5 6 7 8 9 10 11 12 13 14 15 16 17 18 19 20 21 22 23 24 25 26 27 28	Su Mo Tu We Th Fr Sa 1 2 3 4 5 6 7 8 9 10 11 12 13 14 15 16 17 18 19 20 21 22 23 24 25 26 27 28 29 30 31
April 2010	May 2010	June 2010
Su Mo Tu We Th Fr Sa 1 2 3 4 5 6 7 8 9 10 11 12 13 14 15 16 17 18 19 20 21 22 23 24 25 26 27 28 29 30	Su Mo Tu We Th Fr Sa 1 2 3 4 5 6 7 8 9 10 11 12 13 14 15 16 17 18 19 20 21 22 23 24 25 26 27 28 29 30 31	Su Mo Tu We Th Fr Sa 1 2 3 4 5 6 7 8 9 10 11 12 13 14 15 16 17 18 19 20 21 22 23 24 25 26 27 28 29 30

● No school

Volunteer Opportunities

at the

Hawaii School for the Deaf and the Blind



3440 Leahi Avenue
Honolulu HI 96816

Ph. (808) 733-4999 V/TTY
Ph. (866) 970-6179 VP
Fax (808) 733-4824

Rosalind Kia, Volunteer Coordinator

Email: roz_kia@notes.k12.hi.us

Areas of Need

Academic Tutor	Library
Arts & Crafts	Math
Classroom Assistant	Photography
Clerical/Office Help	Physical Education
Computers	Reading Tutor
Drama/Theatre	Residential (Dorm)
English	Residential (Dorm) Tutor
Field Trips	Science
Food Service	Special Activities
History/Social Studies	Special Needs Students
Job Coach	

Every year, dozens of volunteers participate in the Hawaii School for the Deaf and the Blind (HSDB) Volunteer Program. These volunteers play an important role in supporting the work and mission of HSDB.

Opportunities are available for volunteers to work regularly in the library, classrooms, offices, and for special events. They assist with academic programs, recreation, campus activities, and program support. All levels of sign skills are welcome, from beginning ASL students through native signers.

HSDB is implementing a new policy for volunteers. ALL volunteer applicants will spend 10 hours volunteering in the HSDB library to give us a sense of commitment and reliability. Volunteers will be asked to do a variety of tasks (some which may not include contact with students). After completing the 10 hour orientation period, volunteers will be placed in a classroom where there are needs and as space is available.

If you are interested in becoming a volunteer at HSDB please complete the Volunteer Application Packet which contains the following:

HSDB Brochure

Letter to volunteers by Patricia Hamamoto, Superintendent

Drug-Free workplace statement

Volunteer Personnel Information form

Employment Suitability Check (Form 90)

Confidentiality Agreement

Emergency Information form

You will also need to provide:

Photo ID

A copy of current TB test results

The application packet can be found in the Administration Office or can be downloaded from the HSDB website at:

<http://www.hcdb.k12.hi.us/volunteers>

HSDB, A community where all can excel!